

# Ba-Ni (Barium-Nickel)

H. Okamoto

The Ba-Ni phase diagram in [Massalski2] was schematic. Figure 1 shows the Ba-Ni phase diagram calculated by [2007Sha]. The first principle calculation was employed in determining the thermodynamic parameters of the phases involved.

## Reference

2007Sha: S. Shang, Z.J. Liu, and Z.K. Liu, Thermodynamic Modeling of the Ba-Ni-Ti System, *J. Alloys Compd.*, 2007, **430**, p 188-193

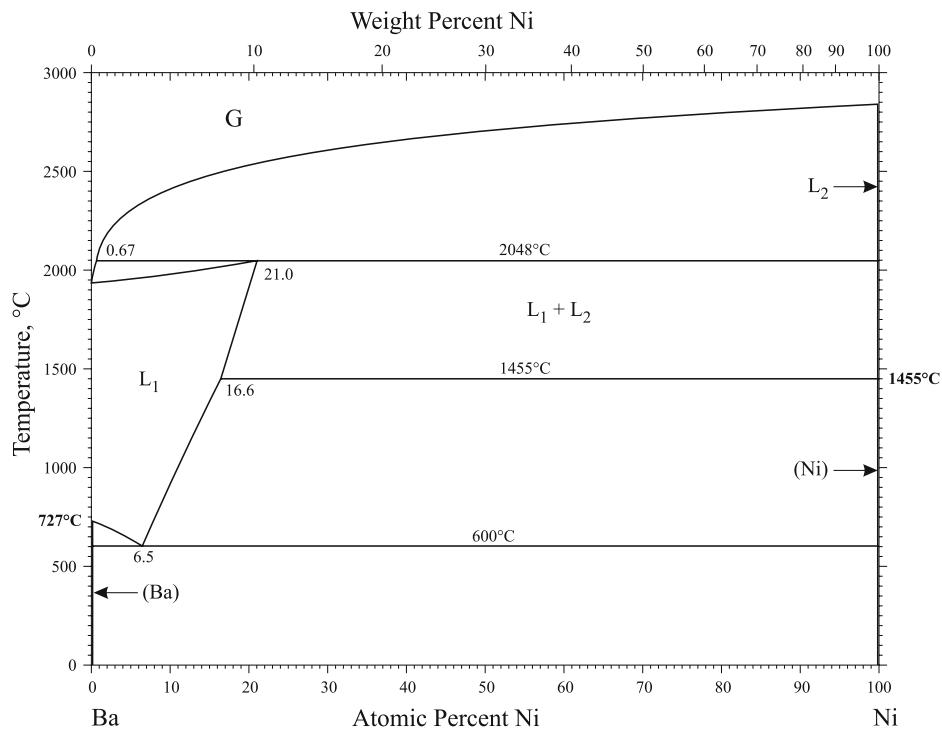


Fig. 1 Ba-Ni phase diagram